



English

Could **significantly improve your vision** and help you go **up to 4 months between treatments** after 3 initial monthly treatments.

People on EYLEA HD saw an average of 8+ more letters on an eye chart in a clinical study at 1 year, similar to those on EYLEA® (aflibercept) Injection. After 3 initial monthly treatments, your retina specialist will choose a treatment schedule of every 2 to 4 months. Your individual results and dosing may vary.

There's still
so much to see ✦

IMPORTANT SAFETY INFORMATION

- EYLEA HD and EYLEA are administered by injection into the eye. You should not use EYLEA HD or EYLEA if you have an infection in or around the eye, eye pain or redness, or known allergies to any of the ingredients in EYLEA HD or EYLEA, including aflibercept.

Please see Important Safety Information throughout and click [here for full Prescribing Information for EYLEA HD and EYLEA.](#)

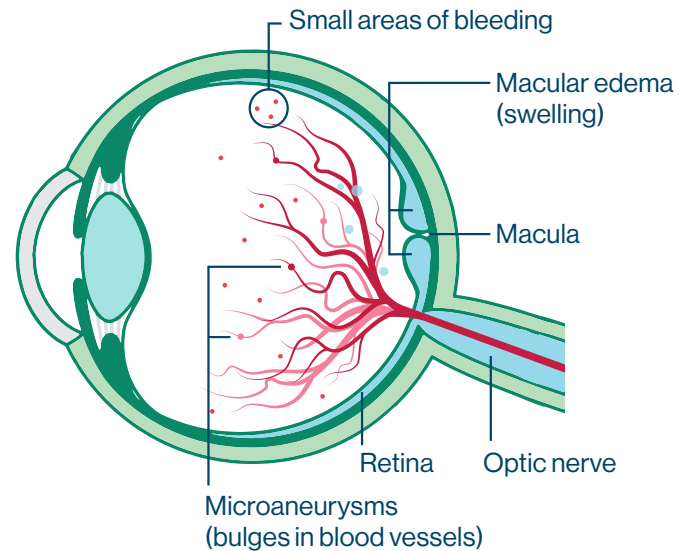


Diabetic Macular Edema and your vision

Diabetic Macular Edema (DME) may cause vision changes that can affect how you experience your world and your ability to live life independently. If it gets worse over time, DME can make it difficult to see the details of what matters the most in your life.

Diabetic Macular Edema is an eye condition that happens when abnormal blood vessels grow and leak fluid into the macula, the part of your retina that gives you sharp central vision. You need your central vision for things like reading, driving, and recognizing faces. Diabetic Macular Edema is a complication that will develop in about half of the people with Diabetic Retinopathy.

How DME affects the eye

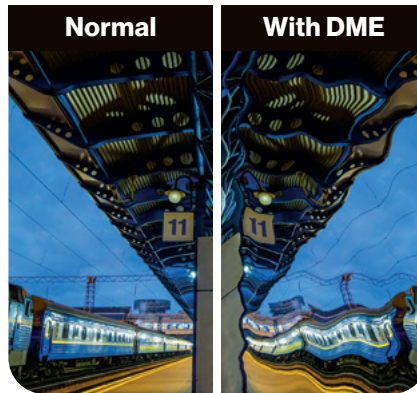


Diabetic Macular Edema is the most common cause of vision loss in people with Diabetic Retinopathy.

The changes Diabetic Macular Edema causes in the back of your eye can produce vision symptoms including:



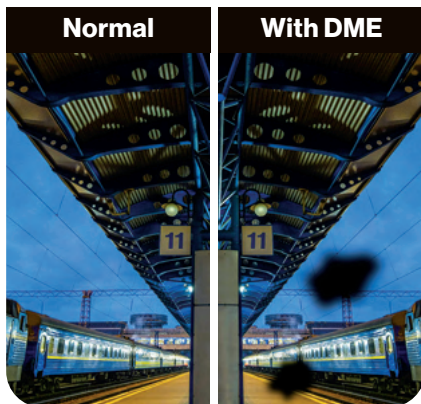
Blurriness in the center of your vision



Straight lines that look wavy



Colors that look dull and washed out



Blind spots or patches

If you're experiencing symptoms, it's important to talk to your retina specialist and follow their recommended treatment plan.



NEXT-GENERATION



EYLEA[®] HD

(aflibercept) Injection 8 mg

**Your vision is critical to your
independence, and it is
important to help protect it.**

IMPORTANT SAFETY INFORMATION (CONT'D)

- Injections into the eye with EYLEA HD or EYLEA[®] (aflibercept) Injection can result in an infection in the eye, retinal detachment (separation of retina from back of the eye) and, more rarely, serious inflammation of blood vessels in the retina that may include blockage. Call your doctor right away if you experience eye pain or redness, light sensitivity, or a change in vision after an injection.

**Please see Important Safety Information throughout and click
here for full Prescribing Information for EYLEA HD and EYLEA.**



EYLEA[®] HD

(aflibercept) Injection 8 mg

What is EYLEA HD?

EYLEA HD may provide **significant vision improvement** for people with DME. In a clinical study, people on EYLEA HD saw **8+ more letters** on an eye chart on average at 1 year.

EYLEA HD is the **first and only treatment of its kind for DME** that is approved for **dosing every 2 to 4 months** after 3 initial monthly treatments. It is a higher dose of aflibercept, the same active ingredient in EYLEA® (aflibercept) Injection. In a clinical study, EYLEA HD provided **comparable vision improvements to EYLEA, with fewer treatments** at 1 year and a **similar safety profile**.

How does EYLEA HD work?

EYLEA HD helps **trap and block VEGF, a main cause of certain retinal conditions that can lead to vision loss**. Blocking VEGF may help reduce the swelling and fluid leaking into the macula and the formation of new abnormal blood vessels.

A retinal condition like Diabetic Macular Edema can seriously affect how you see what's around you. EYLEA HD could make a difference.

IMPORTANT SAFETY INFORMATION (CONT'D)

- In some patients, injections with EYLEA HD or EYLEA may cause a temporary increase in eye pressure within 1 hour of the injection. Sustained increases in eye pressure have been reported with repeated injections, and your doctor may monitor this after each injection.

Please see Important Safety Information throughout and click here for full Prescribing Information for EYLEA HD and EYLEA.

 **EYLEA® HD**
(aflibercept) Injection 8 mg

EYLEA HD is an anti-vascular endothelial growth factor (anti-VEGF) treatment that helps trap and block VEGF—a main cause of certain retinal conditions that can result in vision loss.

VEGF



High levels of this protein can trigger the formation of abnormal blood vessels. These blood vessels swell and leak fluid—leading to damage in the retina and possible vision loss

EYLEA HD



A treatment that helps block VEGF

IMPORTANT SAFETY INFORMATION (CONT'D)

- There is a potential but rare risk of serious and sometimes fatal side effects, related to blood clots, leading to heart attack or stroke in patients receiving EYLEA HD or EYLEA.

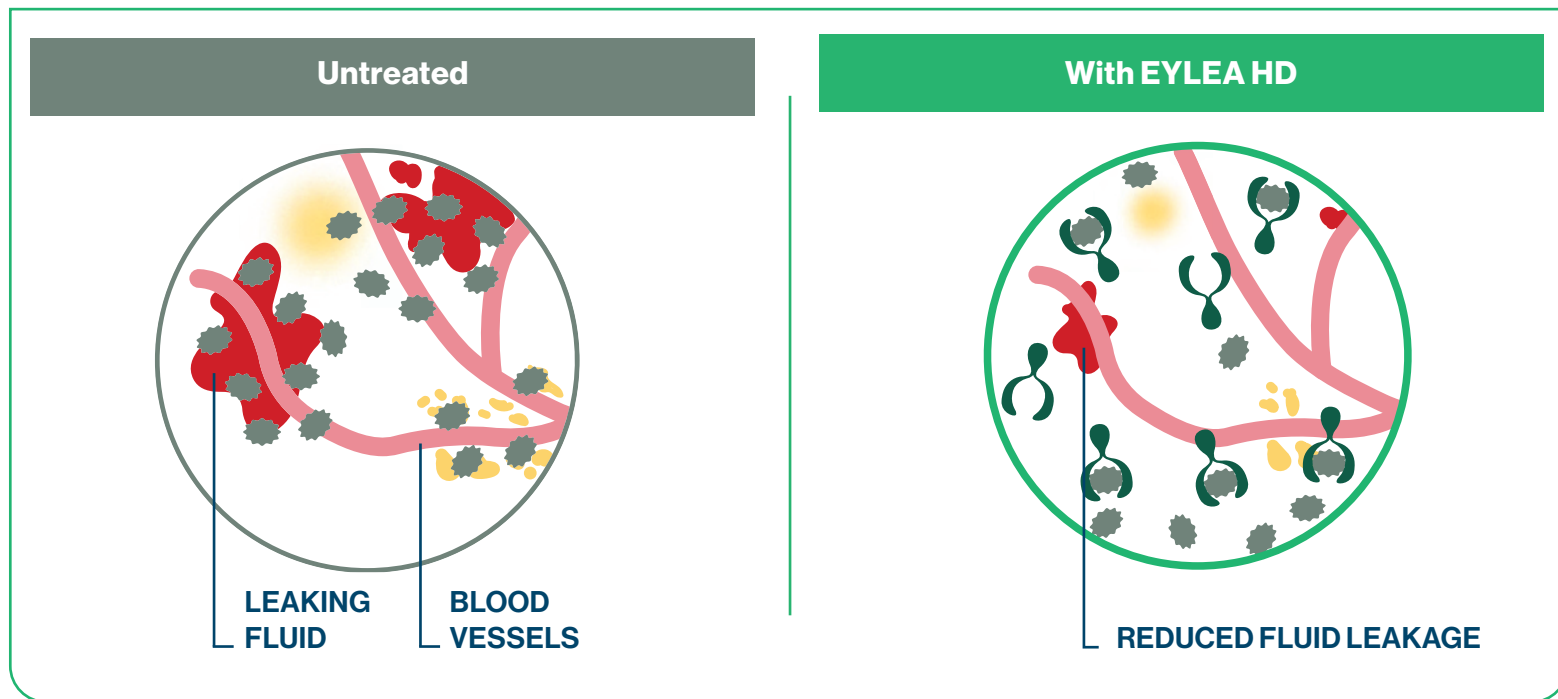
Please see Important Safety Information throughout and click here for full Prescribing Information for EYLEA HD and EYLEA.



EYLEA® HD

(aflibercept) Injection 8 mg

Blocking VEGF may help reduce the swelling and fluid leaking into the macula as well as the formation of new abnormal blood vessels.



IMPORTANT SAFETY INFORMATION (CONT'D)

- The most common side effects reported in patients receiving EYLEA HD were cataract, increased redness in the eye, increased pressure in the eye, eye discomfort, pain, or irritation, blurred vision, vitreous (gel-like substance) floaters, vitreous detachment, injury to the outer layer of the eye, and bleeding in the back of the eye.

Please see Important Safety Information throughout and click here for full Prescribing Information for EYLEA HD and EYLEA.



LONG-LASTING

EYLEA[®] HD**(aflibercept) Injection 8 mg**

★ Could **significantly improve your vision** and help you go **up to 4 months between treatments** after 3 initial monthly treatments.

People on EYLEA HD saw an average of 8+ more letters on an eye chart in a clinical study at 1 year, similar to those on EYLEA[®] (aflibercept) Injection. After 3 initial monthly treatments, your retina specialist will choose a treatment schedule of every 2 to 4 months. Your individual results and dosing may vary.

EYLEA HD was studied in 658 people with Diabetic Macular Edema (491 were assigned to EYLEA HD). People assigned to EYLEA HD every 3 or 4 months (after 3 initial monthly doses) saw 9 and 8 more letters, respectively, on an eye chart vs 9 more letters in those assigned to EYLEA every 2 months (after 5 initial monthly doses). These are average results at 1 year among these people. Your individual results may vary.

IMPORTANT SAFETY INFORMATION (CONT'D)

- The most common side effects reported in patients receiving EYLEA were increased redness in the eye, eye pain, cataract, vitreous detachment, vitreous floaters, moving spots in the field of vision, and increased pressure in the eye.

Please see Important Safety Information throughout and click [here](#) for full Prescribing Information for **EYLEA HD** and **EYLEA**.

**EYLEA[®] HD****(aflibercept) Injection 8 mg**

See the results of EYLEA HD

In a clinical study of DME patients at 1 year:



Patients saw 8+ more letters on an eye chart at 1 year on average. EYLEA HD patients saw noticeable vision **improvements in as little as 3 months.** Some patients saw improvement at 1 month after EYLEA HD treatment

93%

of EYLEA HD patients were able to go 3 or 4 months between treatments, after 3 initial monthly treatments*

20/40

EYLEA HD helped patients get to an average of 20/40 vision at 1 year of treatment.† 20/40 is the vision requirement for driving in most states‡

- You may experience temporary visual changes after an EYLEA HD injection and associated eye exams; do not drive or operate machinery until your vision sufficiently recovers



EYLEA HD may provide noticeable improvements on your retinal imaging that you and your retina specialist can see

*Combined results from 2 groups of people who received EYLEA HD in a clinical trial every 3 or 4 months.

†In the clinical study, people assigned to EYLEA HD every 3 months started with an average of 20/50 vision, and those assigned to EYLEA HD every 4 months started with an average of 20/63 vision.

IMPORTANT SAFETY INFORMATION (CONT'D)

- You may experience temporary visual changes after an EYLEA HD or EYLEA® (aflibercept) Injection and associated eye exams; do not drive or use machinery until your vision recovers sufficiently.

Please see Important Safety Information throughout and click here for full Prescribing Information for EYLEA HD and EYLEA.



EYLEA® HD

(aflibercept) Injection 8 mg

Consider long-lasting **EYLEA HD** for Diabetic Macular Edema



Similar vision improvements to EYLEA® (aflibercept) Injection with fewer injections on average at 1 year



EYLEA HD may allow up to 4 months between treatments after 3 initial monthly treatments. In a clinical study, people received treatment every 2 to 4 months after 3 initial monthly treatments. Dosing may vary



EYLEA HD and EYLEA share a similar safety profile

EYLEA HD was studied in 658 people with Diabetic Macular Edema (491 were assigned to EYLEA HD). People assigned to EYLEA HD every 3 or 4 months (after 3 initial monthly doses) saw 9 and 8 more letters, respectively, on an eye chart vs 9 more letters in those assigned to EYLEA every 2 months (after 5 initial monthly doses). These are average results at 1 year among these people. Your individual results may vary.

IMPORTANT SAFETY INFORMATION (CONT'D)

- EYLEA HD and EYLEA are administered by injection into the eye. You should not use EYLEA HD or EYLEA if you have an infection in or around the eye, eye pain or redness, or known allergies to any of the ingredients in EYLEA HD or EYLEA, including aflibercept.

Please see Important Safety Information throughout and click here for full Prescribing Information for EYLEA HD and EYLEA.

 **EYLEA® HD**
(aflibercept) Injection 8 mg

A close-up, high-resolution photograph of a person's eye, showing the iris, pupil, and surrounding skin texture. The eye is looking slightly upwards and to the right. The lighting is soft, highlighting the details of the eye and the skin.

**What could
4 months between
treatments
mean to you?**

IMPORTANT SAFETY INFORMATION (CONT'D)

- Injections into the eye with EYLEA HD or EYLEA® (aflibercept) Injection can result in an infection in the eye, retinal detachment (separation of retina from back of the eye) and, more rarely, serious inflammation of blood vessels in the retina that may include blockage. Call your doctor right away if you experience eye pain or redness, light sensitivity, or a change in vision after an injection.

Please see Important Safety Information throughout and click here for full Prescribing Information for EYLEA HD and EYLEA.

 **EYLEA® HD**
(aflibercept) Injection 8 mg 11



Your Comprehensive Patient Support Program

If you need help with the cost of EYLEA HD and/or EYLEA® (aflibercept) Injection, help may be available through the EYLEA 4U program for eligible patients. Program conditions apply.

How EYLEA4U may be able to help

If you have a commercial insurance plan (not funded through the government), you may qualify for help with out-of-pocket costs for EYLEA HD and/or EYLEA as well as injection administration.

If you don't have coverage for EYLEA HD and/or EYLEA, or are uninsured, you may qualify to receive EYLEA HD and/or EYLEA at no cost.

For eligibility requirements of EYLEA4U programs,
visit EYLEAHD.com or call 1-855-EYLEA4U (1-855-395-3248).

Please see Important Safety Information throughout and click here for full Prescribing Information for [EYLEA HD](#) and [EYLEA](#).



EYLEA® HD

(aflibercept) Injection 8 mg

IMPORTANT SAFETY INFORMATION

- EYLEA HD and EYLEA are administered by injection into the eye. You should not use EYLEA HD or EYLEA if you have an infection in or around the eye, eye pain or redness, or known allergies to any of the ingredients in EYLEA HD or EYLEA, including aflibercept.
- Injections into the eye with EYLEA HD or EYLEA can result in an infection in the eye, retinal detachment (separation of retina from back of the eye) and, more rarely, serious inflammation of blood vessels in the retina that may include blockage. Call your doctor right away if you experience eye pain or redness, light sensitivity, or a change in vision after an injection.
- In some patients, injections with EYLEA HD or EYLEA may cause a temporary increase in eye pressure within 1 hour of the injection. Sustained increases in eye pressure have been reported with repeated injections, and your doctor may monitor this after each injection.
- There is a potential but rare risk of serious and sometimes fatal side effects, related to blood clots, leading to heart attack or stroke in patients receiving EYLEA HD or EYLEA.
- The most common side effects reported in patients receiving EYLEA HD were cataract, increased redness in the eye, increased pressure in the eye, eye discomfort, pain, or irritation, blurred vision, vitreous (gel-like substance) floaters, vitreous detachment, injury to the outer layer of the eye, and bleeding in the back of the eye.
- The most common side effects reported in patients receiving EYLEA were increased redness in the eye, eye pain, cataract, vitreous detachment, vitreous floaters, moving spots in the field of vision, and increased pressure in the eye.
- You may experience temporary visual changes after an EYLEA HD or EYLEA injection and associated eye exams; do not drive or use machinery until your vision recovers sufficiently.
- For additional safety information, please talk to your doctor and see the full Prescribing Information for EYLEA HD and EYLEA.

You are encouraged to report negative side effects of prescription drugs to the FDA. Visit www.fda.gov/medwatch or call 1-800-FDA-1088.

INDICATIONS

EYLEA® HD (aflibercept) Injection 8 mg is a prescription medicine approved for the treatment of patients with Wet Age-Related Macular Degeneration (AMD), Diabetic Macular Edema (DME), and Diabetic Retinopathy (DR).

EYLEA® (aflibercept) Injection 2 mg is a prescription medicine approved for the treatment of patients with Wet Age-Related Macular Degeneration (AMD), Macular Edema following Retinal Vein Occlusion (RVO), Diabetic Macular Edema (DME), and Diabetic Retinopathy (DR).

Please click [here](#) for full Prescribing Information for EYLEA HD and EYLEA.

 **EYLEA® HD**
(aflibercept) Injection 8 mg

LONG-LASTING
EYLEA[®] HD
(aflibercept) Injection 8 mg

Could **significantly improve your vision** and help you go **up to 4 months between treatments** after 3 initial monthly treatments.

People on EYLEA HD saw an average of 8+ more letters on an eye chart in a clinical study at 1 year, similar to those on EYLEA[®] (aflibercept) Injection. After 3 initial monthly treatments, your retina specialist will choose a treatment schedule of every 2 to 4 months. Your individual results and dosing may vary.

Ask your retina specialist about EYLEA HD for vision improvement and the potential for fewer injections



Scan to visit
EYLEAHD.com

IMPORTANT SAFETY INFORMATION (CONT'D)

In some patients, injections with EYLEA HD or EYLEA may cause a temporary increase in eye pressure within 1 hour of the injection. Sustained increases in eye pressure have been reported with repeated injections, and your doctor may monitor this after each injection.

REGENERON[®]

The information contained herein is provided for general educational purposes. If you have any questions, talk to your retina specialist. For U.S. Residents Only.

Please see additional Important Safety Information on previous pages and click here for full Prescribing Information for EYLEA HD and EYLEA.

EYLEA and EYLEA4U are registered trademarks of Regeneron Pharmaceuticals, Inc.
© 2024, Regeneron Pharmaceuticals, Inc.
All rights reserved. 777 Old Saw Mill
River Road, Tarrytown, NY 10591
03/2024 US.EHD.24.02.0083