

LONG-LASTING
EYLEA[®] HD
(aflibercept) Injection 8 mg

English

Could **significantly improve your vision** and help you go **up to 4 months between treatments** after 3 initial monthly treatments.

People on EYLEA HD saw an average of 6+ more letters on an eye chart in a clinical study at 1 year, similar to those on EYLEA[®] (aflibercept) Injection. After 3 initial monthly treatments, your retina specialist will choose a treatment schedule of every 2 to 4 months. Your individual results and dosing may vary.

There's still
so much to see ✨



IMPORTANT SAFETY INFORMATION

- EYLEA HD and EYLEA are administered by injection into the eye. You should not use EYLEA HD or EYLEA if you have an infection in or around the eye, eye pain or redness, or known allergies to any of the ingredients in EYLEA HD or EYLEA, including aflibercept.

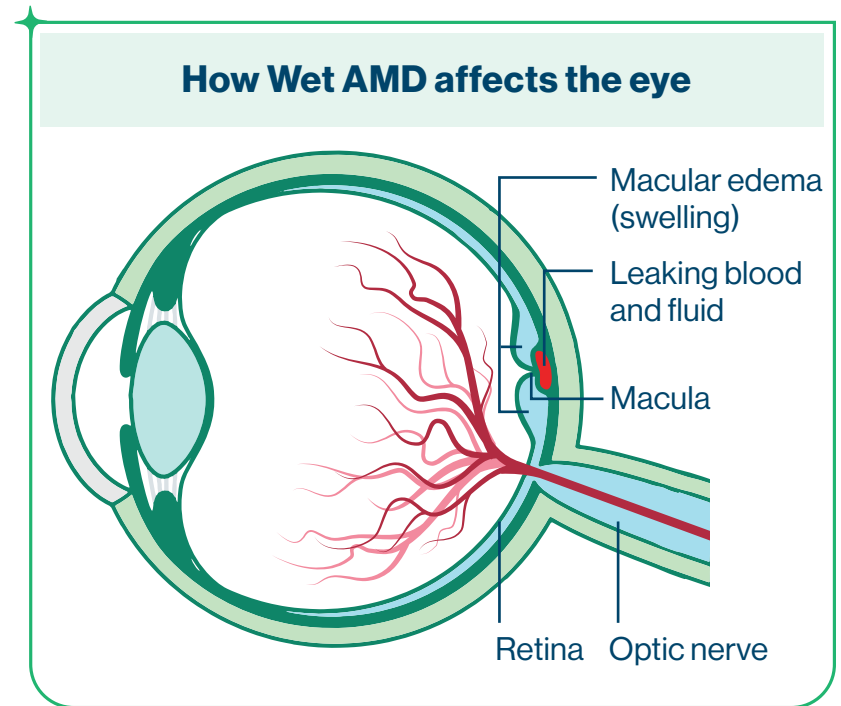
Please see additional Important Safety Information throughout and full Prescribing Information for EYLEA HD and EYLEA.

 **EYLEA[®] HD**
(aflibercept) Injection 8 mg

Wet AMD and your vision

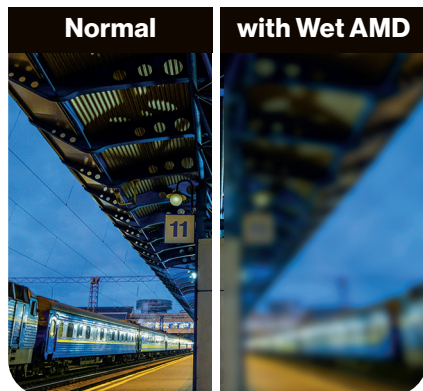
Wet Age-Related Macular Degeneration (Wet AMD) causes vision loss that can affect how you experience your world and whether you can live your life independently. It impacts your central vision, which you need for things like reading and driving. As it gets worse over time, Wet AMD can make the things you need and want to do more difficult.

Wet AMD is an eye condition that happens when abnormal blood vessels grow and leak fluid into the macula, the part of your retina that gives you sharp, detailed central vision.

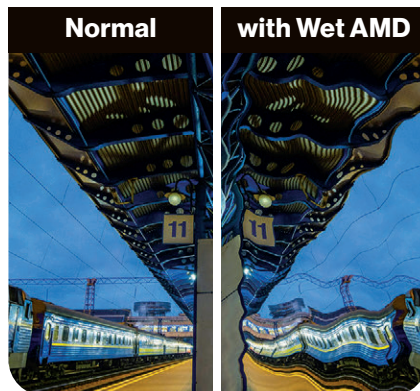


Wet AMD is a leading cause of vision loss among people 60 years of age and older.

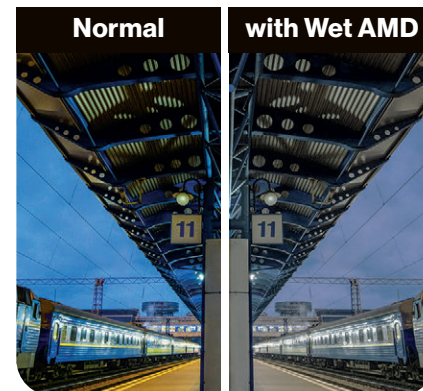
The changes Wet AMD causes in the back of your eye can produce vision symptoms including:



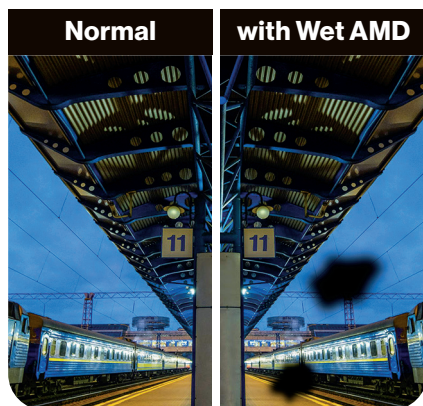
Blurriness in the center of your vision



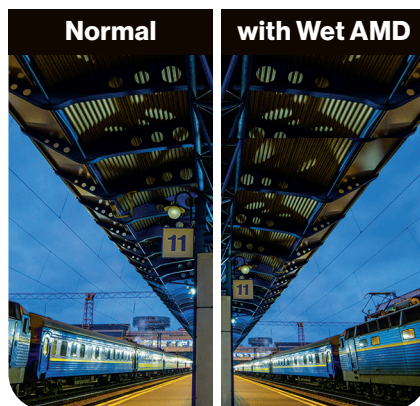
Straight lines that look wavy



Colors that look dull and washed out



Blind spots or patches



Objects that seem farther away than they really are

If you're experiencing symptoms, it's important to talk to your retina specialist and follow their recommended treatment plan.



NEXT-GENERATION



EYLEA[®] HD

(aflibercept) Injection 8 mg

**Your vision is critical to your
independence, and it is
important to help protect it.**

IMPORTANT SAFETY INFORMATION (CONT'D)

- Injections into the eye with EYLEA HD or EYLEA[®] (aflibercept) Injection can result in an infection in the eye, retinal detachment (separation of retina from back of the eye) and, more rarely, serious inflammation of blood vessels in the retina that may include blockage. Call your doctor right away if you experience eye pain or redness, light sensitivity, or a change in vision after an injection.

**Please see additional Important Safety Information throughout
and full Prescribing Information for EYLEA HD and EYLEA.**



EYLEA[®] HD

(aflibercept) Injection 8 mg

What is EYLEA HD?

EYLEA HD may provide **significant vision improvement** for people with Wet AMD. In a clinical study, people on EYLEA HD saw **6+ more letters** on an eye chart on average at 1 year.

EYLEA HD is the **first and only treatment of its kind for Wet AMD** that is approved for **dosing every 2 to 4 months** after 3 initial monthly treatments. It is a higher dose of aflibercept, the same active ingredient in EYLEA® (aflibercept) Injection. In a clinical study, it provided **comparable vision improvements to EYLEA, with fewer treatments** at 1 year and a **similar safety profile**.

How does EYLEA HD work?

EYLEA HD helps **trap and block VEGF, a main cause of certain retinal conditions that can lead to vision loss**. Blocking VEGF may help reduce the swelling and fluid leaking into the macula and the formation of new abnormal blood vessels.

A retinal condition like Wet AMD can seriously affect how you see what's around you. EYLEA HD could make a difference.

IMPORTANT SAFETY INFORMATION (CONT'D)

- In some patients, injections with EYLEA HD or EYLEA may cause a temporary increase in eye pressure within 1 hour of the injection. Sustained increases in eye pressure have been reported with repeated injections, and your doctor may monitor this after each injection.

Please see additional Important Safety Information throughout and full Prescribing Information for EYLEA HD and EYLEA.



EYLEA® HD

(aflibercept) Injection 8 mg

EYLEA HD is an anti-vascular endothelial growth factor (anti-VEGF) treatment that helps trap and block VEGF—a main cause of certain retinal conditions that can result in vision loss.

VEGF



High levels of this protein can trigger the formation of abnormal blood vessels. These blood vessels swell and leak fluid—leading to damage in the retina and possible vision loss

EYLEA HD



A treatment that helps block VEGF

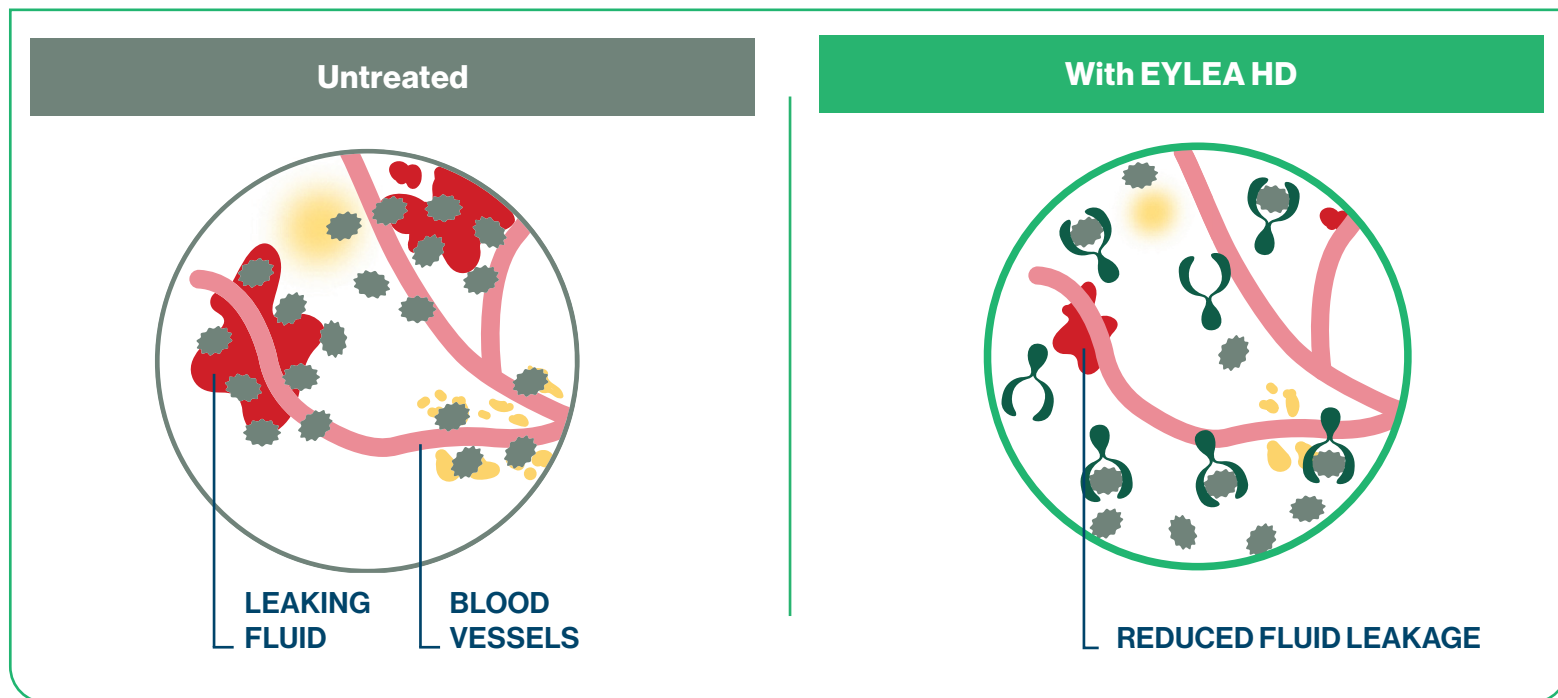
IMPORTANT SAFETY INFORMATION (CONT'D)

- There is a potential but rare risk of serious and sometimes fatal side effects, related to blood clots, leading to heart attack or stroke in patients receiving EYLEA HD or EYLEA® (aflibercept) Injection.

Please see additional Important Safety Information throughout and full Prescribing Information for EYLEA HD and EYLEA.

 **EYLEA® HD**
(aflibercept) Injection 8 mg

Blocking VEGF may help reduce the swelling and fluid leaking into the macula as well as the formation of new abnormal blood vessels.



IMPORTANT SAFETY INFORMATION (CONT'D)

- The most common side effects reported in patients receiving EYLEA HD were cataract, increased redness in the eye, increased pressure in the eye, eye discomfort, pain, or irritation, blurred vision, vitreous (gel-like substance) floaters, vitreous detachment, injury to the outer layer of the eye, and bleeding in the back of the eye.

Please see additional Important Safety Information throughout and full Prescribing Information for EYLEA HD and EYLEA.

 **EYLEA[®] HD**
(aflibercept) Injection 8 mg



LONG-LASTING

EYLEA[®] HD

(aflibercept) Injection 8 mg

✦ Could **significantly improve your vision** and help you go **up to 4 months between treatments** after 3 initial monthly treatments.

People on EYLEA HD saw an average of 6+ more letters on an eye chart in a clinical study at 1 year, similar to those on EYLEA[®] (aflibercept) Injection. After 3 initial monthly treatments, your retina specialist will choose a treatment schedule of every 2 to 4 months. Your individual results and dosing may vary.



IMPORTANT SAFETY INFORMATION (CONT'D)

- The most common side effects reported in patients receiving EYLEA were increased redness in the eye, eye pain, cataract, vitreous detachment, vitreous floaters, moving spots in the field of vision, and increased pressure in the eye.

Please see additional Important Safety Information throughout and full Prescribing Information for EYLEA HD and EYLEA.



EYLEA[®] HD

(aflibercept) Injection 8 mg

See the results of EYLEA HD

In a clinical study of Wet AMD patients at 1 year:



Patients saw 6+ more letters on an eye chart at 1 year on average.

EYLEA HD patients saw noticeable vision **improvements in as little as 3 months**. Some patients saw improvement at 1 month after EYLEA HD treatment.

83%
of EYLEA HD patients

were able to go **3 or 4 months between treatments** after 3 initial monthly treatments*



EYLEA HD may provide noticeable improvements on your retinal imaging that both you and your retina specialist can see

EYLEA HD was studied in 1009 people with Wet AMD (673 were assigned to EYLEA HD). People assigned to EYLEA HD every 3 or 4 months saw 7 and 6 more letters, respectively, on an eye chart vs 8 more letters in those assigned to EYLEA® (aflibercept) Injection every 2 months. Each group had 3 initial monthly treatments. These are average results at 1 year among these people. Your individual results may vary.

*Combined results from 2 groups of people who received EYLEA HD in a clinical trial every 3 or 4 months.

IMPORTANT SAFETY INFORMATION (CONT'D)

- You may experience temporary visual changes after an EYLEA HD or EYLEA injection and associated eye exams; do not drive or use machinery until your vision recovers sufficiently.

Please see additional Important Safety Information throughout and full Prescribing Information for EYLEA HD and EYLEA.



EYLEA® HD

(aflibercept) Injection 8 mg

Consider long-lasting **EYLEA HD** for Wet AMD



Similar vision improvements to EYLEA® (aflibercept) Injection with fewer injections on average at 1 year



EYLEA HD may allow up to 4 months between treatments after 3 initial monthly treatments. In a clinical study, people received treatment every 2 to 4 months after 3 initial monthly treatments. Dosing may vary



EYLEA HD and EYLEA share a similar safety profile

EYLEA HD was studied in 1009 people with Wet AMD (673 were assigned to EYLEA HD). People assigned to EYLEA HD every 3 or 4 months saw 7 and 6 more letters, respectively, on an eye chart vs 8 more letters in those assigned to EYLEA every 2 months. Each group had 3 initial monthly treatments. These are average results at 1 year among these people. Your individual results may vary.

IMPORTANT SAFETY INFORMATION (CONT'D)

- EYLEA HD and EYLEA are administered by injection into the eye. You should not use EYLEA HD or EYLEA if you have an infection in or around the eye, eye pain or redness, or known allergies to any of the ingredients in EYLEA HD or EYLEA, including aflibercept.

Please see additional Important Safety Information throughout and full Prescribing Information for EYLEA HD and EYLEA.



EYLEA® HD

(aflibercept) Injection 8 mg

What could
**4 months between
treatments**
mean to you?

IMPORTANT SAFETY INFORMATION (CONT'D)

- Injections into the eye with EYLEA HD or EYLEA® (aflibercept) Injection can result in an infection in the eye, retinal detachment (separation of retina from back of the eye) and, more rarely, serious inflammation of blood vessels in the retina that may include blockage. Call your doctor right away if you experience eye pain or redness, light sensitivity, or a change in vision after an injection.

**Please see additional Important Safety Information throughout
and full Prescribing Information for EYLEA HD and EYLEA.**

 **EYLEA® HD**
(aflibercept) Injection 8 mg



Your Comprehensive Patient Support Program

If you need help with the cost of EYLEA HD and/or EYLEA® (aflibercept) Injection, help may be available through the EYLEA 4U program for eligible patients. Program conditions apply.

How EYLEA4U may be able to help

If you have a commercial insurance plan (not funded through the government), you may qualify for help with out-of-pocket costs for EYLEA HD and/or EYLEA as well as injection administration.

If you don't have coverage for EYLEA HD and/or EYLEA, or are uninsured, you may qualify to receive EYLEA HD and/or EYLEA at no cost.

For eligibility requirements of EYLEA4U programs,
visit EYLEAHD.com or call 1-855-EYLEA4U (1-855-395-3248).

Please see Important Safety Information throughout and full Prescribing Information for EYLEA HD and EYLEA.

 **EYLEA® HD**
(aflibercept) Injection 8 mg

IMPORTANT SAFETY INFORMATION

- EYLEA HD and EYLEA are administered by injection into the eye. You should not use EYLEA HD or EYLEA if you have an infection in or around the eye, eye pain or redness, or known allergies to any of the ingredients in EYLEA HD or EYLEA, including aflibercept.
- Injections into the eye with EYLEA HD or EYLEA can result in an infection in the eye, retinal detachment (separation of retina from back of the eye) and, more rarely, serious inflammation of blood vessels in the retina that may include blockage. Call your doctor right away if you experience eye pain or redness, light sensitivity, or a change in vision after an injection.
- In some patients, injections with EYLEA HD or EYLEA may cause a temporary increase in eye pressure within 1 hour of the injection. Sustained increases in eye pressure have been reported with repeated injections, and your doctor may monitor this after each injection.
- There is a potential but rare risk of serious and sometimes fatal side effects, related to blood clots, leading to heart attack or stroke in patients receiving EYLEA HD or EYLEA.
- The most common side effects reported in patients receiving EYLEA HD were cataract, increased redness in the eye, increased pressure in the eye, eye discomfort, pain, or irritation, blurred vision, vitreous (gel-like substance) floaters, vitreous detachment, injury to the outer layer of the eye, and bleeding in the back of the eye.
- The most common side effects reported in patients receiving EYLEA were increased redness in the eye, eye pain, cataract, vitreous detachment, vitreous floaters, moving spots in the field of vision, and increased pressure in the eye.
- You may experience temporary visual changes after an EYLEA HD or EYLEA injection and associated eye exams; do not drive or use machinery until your vision recovers sufficiently.
- For additional safety information, please talk to your doctor and see the full Prescribing Information for EYLEA HD and EYLEA.

You are encouraged to report negative side effects of prescription drugs to the FDA. Visit www.fda.gov/medwatch or call 1-800-FDA-1088.

INDICATIONS

EYLEA® HD (aflibercept) Injection 8 mg is a prescription medicine approved for the treatment of patients with Wet Age-Related Macular Degeneration (AMD), Diabetic Macular Edema (DME), and Diabetic Retinopathy (DR).

EYLEA® (aflibercept) Injection 2 mg is a prescription medicine approved for the treatment of patients with Wet Age-Related Macular Degeneration (AMD), Macular Edema following Retinal Vein Occlusion (RVO), Diabetic Macular Edema (DME), and Diabetic Retinopathy (DR).

Please see full Prescribing Information for EYLEA HD and EYLEA.

 **EYLEA® HD**
(aflibercept) Injection 8 mg

LONG-LASTING
EYLEA® HD
(aflibercept) Injection 8 mg

Could **significantly improve your vision** and help you go **up to 4 months between treatments** after 3 initial monthly treatments.

People on EYLEA HD saw an average of 6+ more letters on an eye chart in a clinical study at 1 year, similar to those on EYLEA® (aflibercept) Injection. After 3 initial monthly treatments, your retina specialist will choose a treatment schedule of every 2 to 4 months. Your individual results and dosing may vary.

Ask your retina specialist about EYLEA HD for vision improvement and the potential for fewer injections



Scan to visit
EYLEAHD.com

IMPORTANT SAFETY INFORMATION (CONT'D)

In some patients, injections with EYLEA HD or EYLEA may cause a temporary increase in eye pressure within 1 hour of the injection. Sustained increases in eye pressure have been reported with repeated injections, and your doctor may monitor this after each injection.

Please see additional Important Safety Information on previous pages and full Prescribing Information for EYLEA HD and EYLEA.

REGENERON®

The information contained herein is provided for general educational purposes. If you have any questions, talk to your retina specialist. For U.S. Residents Only.

EYLEA and EYLEA4U are registered trademarks of Regeneron Pharmaceuticals, Inc.

© 2024, Regeneron Pharmaceuticals, Inc.
All rights reserved. 777 Old Saw Mill
River Road, Tarrytown, NY 10591

03/2024 US.EHD.24.02.0078